

September 2013 edition

Volume 1, Issue 1

UPCOMING CHAPTER EVENTS

DINNER MTG—Sep 10th

FAN SOUND ISSUES PLUS

DOE & FOE UPDATE

4:30–5:15 PM BOG Meeting
 5:30 - 6:00 PM Sign In/Networking
 6:00 - 6:15 PM Dinner/Announcements
 6:15 - 7:30 PM Program

General Meeting

DINNER/LUNCH COST

Members - \$30/\$35 after RSVP deadline
 Non-Members - \$40
 Student/Lifetime Members- Free

RESERVATIONS

If you are planning to attend one of the Chapter Meetings, please RSVP at least four (4) business days before the meeting. RSVP via the Chapter's website or email at central.az.ashrae@gmail.com.

LOCATION

Radisson Hotel
 427 N 44th Street
 Phoenix, AZ 85008

Speaker Profile:

Thomas J. Gustafson is the Chief Technology Officer for Hartzell Air Movement where he has been employed since 1988. Tom holds a Bachelor's of Science degree in Mechanical Engineering from North Dakota State University. He began his career working at Trane Company where he worked various positions such as Design Engineer, Senior Design Engineer, and also Fan Design Principle Engineer, all over a 9 year period.

Tom first accepted a position at Hartzell working as an Application Engineer, but was quickly promoted to Engineering Manager, a position he held for five years. He next became the Vice President of Engineering. In December 2011, he was promoted to his current position, Chief Technology Officer.

Tom is a member of ASHRAE, The American Society of Materials, and The National Fire Protection Agency (NFPA). Tom was elected to the AMCA Board of Directors in 2012 and is currently serving a three year term. He is also on

several technical committees— Fan Technical Committee, Advisory Committee on Electronic Catalogs, and is Chair of the Certified Ratings Program Committee.

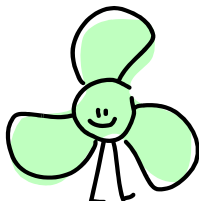
During his time at Hartzell, Tom has many achievements including being the champion of the design concept for the one-piece solid fiberglass FA wheel. Also the principal author of a recent patent, reducing the sound levels of an adjustable pitch prop.



DID YOU KNOW? Within the span of one week earlier this month, ASME President Madiha El Mehelmy Kotb participated in two ASME landmark designation ceremonies on different continents. During the ceremonies, two popular tourist attractions – Waikiki Beach Wave Pool in Arizona and the Titan Crane in Scotland – were designated as historic landmarks of mechanical engineering achievement. In the first ceremony, on Aug. 17, the Society designated the Waikiki Beach Wave Pool at the Big Surf Waterpark in Tempe, Ariz., as an ASME Historic Mechanical Engineering Landmark. The wave pool, which opened in 1969, was recognized by the Society for being the first inland surfing facility in North America.

INSIDE THIS ISSUE

Speaker Profile	1
Trap Shoot - First Annual	2
Calendar of events	3
Photos from Spring Golf	4
Research Promotion	5



I-10 TRAP SHOOT CLASSIC

Time: Shooting: 1:30pm

BBQ: 4:30pm

Where: Casa Grande Trap & Skeet

8015 S. Isom Road

Casa Grande, AZ 85193

520-836-9926

Cost: \$90 per shooter

Includes: Safety Briefing, Clays, Ammo,
Gun, BBQ Dinner, Raffles and Prizes



register and pay online, go to
<http://centralaz.ashraechapters.org/>



Chapter Events Calendar for 2013-2014



The ASHRAE Central Arizona Chapter holds monthly meetings from September to May. Unless indicated otherwise, Chapter Meetings are held in the Grand Canyon Room of the Radisson Hotel Phoenix Airport North, located at 427 North 44th Street in Phoenix. Free parking is available.

Meeting Date	Location	General Meeting Topic	Time	Notes	Time
9/10/13	Radisson Hotel	Fan Sound Issues & FEG & DOE Update	6:00 PM		
10/8/13	Radisson Hotel	Dinner Meeting	6:00 PM		
11/9/13	Casa Grande	Trap Shoot Classic	1:30 PM	8015 S Ison Rd, Casa Grande	
11/12/13	Radisson Hotel	Membership Dinner Meeting	6:00 PM	Past Presidents' Night	
12/10/13	Radisson Hotel	Lunch Meeting	11:30 AM		
12/12/13	Sun Up brewery	Holiday Social	4-8:00 PM		
1/14/14	Radisson Hotel	Dinner Meeting	6:00 PM		
2/11/14	Radisson Hotel	Lunch Meeting	11:30 AM		
2/20/14	El Zaribah Shrine Auditorium	ASHRAE/ASPE Chapter Product Show	2:00 PM		
3/11/14	Radisson Hotel	Dinner Meeting	6:00 PM		
4/8/14	Radisson Hotel	Dinner Meeting	6:00 PM		
4/11/14	TBD	Annual Golf Tournament Shotgun Start	TBD		
5/13/2014	Radisson Hotel	Dinner Meeting	6:00 PM		

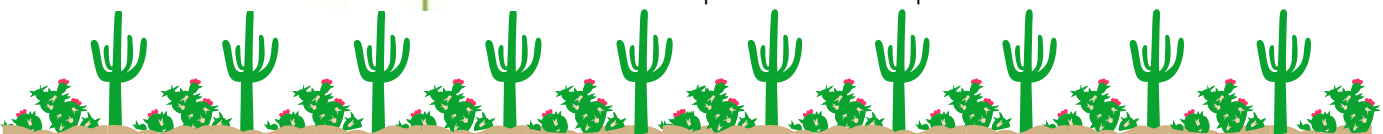
2012-2013 Chapter Board of Governors

President-Tom Andrews, PE
 President Elect: Colin E. Laisure-Pool, EIT, LEED
 Secretary: James Kennelly, EIT
 Treasurer: Beau Turner, EIT
 Board Member.: Keith Wheelis
 Board Member: Pete Menconi, PE
 Board Member: Charlie Pehl

2013—2014 Chapter Committees

Electronic Communications:
 CTTC Co –Chair: Justin Niska
 CTTC Co—Chair: Brian Martin
 Golf Tournament Chair: Tyson Padgett /Justin Niska
 Historian: John Benson, PE
 Membership Promotion Chair: Gabe Millican
 Newsletter Editor: Dianne Langmade
 Product Show Chair: Charlie Pehl
 Product Show Co -Chair : Pete Menconi, PE
 Web-site Developer: Kellie Huff
 Research Promotion Chair: Jim Hart
 Student Activities Chair: James W, Kennelly, EIT
 Young Engineers (YEA) - Austin Condon

Statements made in this publication are not expressions of the Society or of the Chapter and may not be reproduced without special permission of the Chapter.



SPRING RESEARCH PROMOTION GOLF TOURNAMENT



RESEARCH PROMOTION

Contributing online is safe, easy, encouraged, and goes a long way to help our chapter reach its annual \$21,000 Research Promotion goal.

Using your favorite browser, navigate to

<https://xp20.ashrae.org/secure/researchpromotion/rp.html>.

This is a secure website, and it is EASY!

And now you have the following decisions to make as you complete the online form: *How much should I contribute?* Individual honor role starts at \$100 company honor role starts at \$150. Give whatever amount suits you.

To what am I contributing? ASHRAE Research is most common, but other ASHRAE programs are listed. ASHRAE is a 501(c)(3) corporation.

I am contributing as an individual or as a company? This is your choice, and honor role recognition is for either the company or the individual.

How do I fund my contribution? Use a credit card. Okay, now what? You will receive a receipt from ASHRAE for your contribution. You, or the company, will be recognized by the chapter. ASHRAE recognizes honor role contributors with certificates, coins, and plaques.

PLEASE - Make your contribution today!

Dust Devil



2014 ASHRAE
WINTER CONFERENCE
New York, NY