



JANUARY 2017

NEWSLETTER OF THE CENTRAL ARIZONA CHAPTER OF ASHRAE

CALENDAR

JANUARY

- 10 4:30 Board Meeting / Radisson
- 10 5:30 Chapter Meeting / Radisson
- 17 11:30 ASPE / Aunt Chiladas
- 28—2/1 Winter Conference & AHR Expo /
Las Vegas

FEBRUARY

- 13 4:30 Board Meeting / Radisson
- 14 11:30 Chapter Meeting / Radisson
- 16 2:00 Annual Tabletop Product Show / El Z
- 21 11:30 ASPE / Aunt Chiladas

MARCH

- 10 7:00 ASPE Golf
- 14 4:30 Board Meeting / Radisson
- 14 5:30 Chapter Meeting / Radisson
- 21 11:30 ASPE / Aunt Chiladas

APRIL

- 7 6:30 Annual Golf Tournament / TBD
- 10 4:30 Board Meeting / Radisson
- 11 11:30 Chapter Meeting / Radisson
- 18 11:30 ASPE / Aunt Chiladas

MAY

- 9 4:30 Board Meeting / Radisson
- 9 5:30 Chapter Meeting / Radisson
- 16 11:30 ASPE / Aunt Chiladas

JUNE

- (9) 7:00 Annual Chapter Awards Dinner / TBD

SEPTEMBER

- 12 5:30 Chapter Meeting / Radisson

Statements made in this publication are not expressions of the Society or of the chapter and may not be reproduced without special permission of the chapter.

BEAU TURNER
CHAPTER PRESIDENT 2016/17



This month's exhortation:

SEE YOU AT THE TABLETOP!!!

bturneraz@gmail.com

2016:



MONTHLY ATTENDANCE SCORECARD

January (murder, she wrote): 57e
December (Ethics): 54
November (Canabis): 45
October (Data centers): 66
September (Controls): 51

2016 AVG TD: 54.6

LOOKING AHEAD: FEBRUARY MEETING TOPIC

BIM IMPLEMENTATION & COORDINATION

David Metcalf and Emily Clark of CADsoft Consulting are teaming up to offer suggestions and answer your questions about BIM in the HVAC world.

AND IN THE REARVIEW MIRROR:

MURDER: ALIVE AND WELL



The January topic (Forensic application of evaporative cooling) was presented by Roy Otterbein, PE, an expert in evaporative cooling processes. He was engaged by the defense in a murder trial to establish the time of demise (of the victim, of course...who else?), in order to bolster an alibi.

The main thrust of the test was to show how long it took for a washcloth to dry. Some of the challenges were that records on interior conditions for the scene of the crime were sketchy and the degree of saturation of the cloth was arguable. Mr. Otterbein devised a test apparatus, and made lots of graphs.

The jury didn't buy it, so if you murder someone, make sure not to use a washcloth!

DID SANTA BRING YOU A CERT?

ASHRAE CERTIFICATION: BUILDING ENERGY ASSESSMENT PROFESSIONAL (BEAP)

No, it's not a Road Runner joke! The BEAP certification applies to Building Energy Assessment Professionals, skilled in auditing and analyzing residential, commercial and industrial energy use; and what to do about it. Currently, there are over 2,500 holders of this cert.

ASHRAE STUFF

Boss' birthday coming up? In a quandary what to buy? How about the new ASHRAE Standard 62.1 User's Manual? Just 80 bucks at a website near you. Updated to the most recent 2016 changes. New spreadsheets. Everyone loves spreadsheets.

Beats the manual on anger management you got the boss last year.

ANNUAL JOINT ASHRAE/ASPE
TABLETOP PRODUCT EXPOSITION:

FEBRUARY 16 2 PM – 7 PM

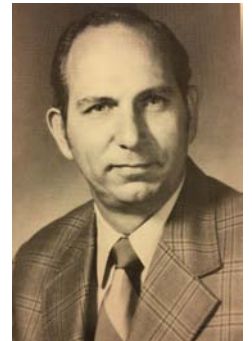
Best show in town! Closer than Las Vegas! Free food!



HISTORY COMES ALIVE*

January highlight**: **LSW ENGINEERS**

LSW Engineers Arizona, Inc. (LSW) is a full service mechanical and electrical engineering firm with a 70-year history of providing high-quality, innovative, and energy efficient design solutions for Arizona's built environment. Since inception in 1947, the firm has undergone several name changes as new partners joined the firm. In 2000, when the last of the firm's founding partners retired, the firm name changed to what it is currently.



LSW was started in 1947 by M.M. (Larry) Lowry as a sole proprietorship under the name M.M. Lowry, Consulting Engineer. Mr. Lowry graduated in 1934 from the Georgia School of Technology with a B.S. in

Electrical Engineering and worked in contracting operations and as an engineer in government service in West Virginia. Mr. Lowry moved to Arizona in 1946 and opened the firm a year later. He held registrations in 17 states and was involved in numerous industry organizations including ASHRAE, CECA, ACEA, ASPE, and NHPE.

In 1951, James P. Sorensen joined the firm: Mr. Sorensen graduated from the University of Colorado in 1947 with his B.S. in Mechanical Engineering. After serving three years in the U.S. Navy, he gained experience working with three valley architectural firms. He too was very involved with many industry organizations including ASHRAE, ACEC, ACEA, and NSPE.

In 1953, Mr. Lowry and Mr. Sorensen formed a partnership under the name of Lowry and Sorensen Engineers. In 1961, the firm started operating as a corporation under the name Lowry and Sorensen Engineering Co., Inc.

The third founding partner, Robert J. Willcoxson, joined the firm in 1962: Mr. Willcoxson earned his B.S. in Mechanical Engineering from San Diego State College in 1957. He held registrations in five states, and was a member of ACEC, ASPE, and NSPE.

In 1975 Mr. Willcoxson became a partner, which resulted in the name changing to Lowry-Sorensen-Willcoxson Engineers, Inc. In 1977, the firm opened up a second practice in San Diego, California and the companies were renamed as Lowry-Sorensen-Willcoxson Engineers Arizona, Inc. and Lowry-Sorensen-Willcoxson Engineers California, Inc.

After 70 years in business, several of the valley's engineering firms can be traced back to LSW, including Pearson Engineering Associates, Professional Consulting Engineers, Tesco Engineering, Sequoia Engineering, Kunka Engineering, Timmerman Engineering, and Saguaro Engineering to name a few.

With well over 18,000 projects completed since its founding, the firm's design and engineering work can be seen all across Arizona. Some of the firm's notable projects include: Phoenix Sky Harbor International Airport, ASU Activities Center, Motorola, Herberger Theater, Banner University Medical Center (when it was named Good Samaritan Hospital), Mesa Arts Center, and Midwestern University.

Currently, the Phoenix office employs 48 staff, which includes 15 Professional Engineers (PE's), three Engineers-in-Training (EIT's), a Registered Communication Distribution Designer (RCDD), six LEED Accredited Professionals (AP's), a Certified Energy Auditor, and two full-time field observers. The San Diego practice employs 11 staff, which includes three PE's, two EIT's, two LEED AP's, and one Energy

Manager-in-Training. The firm has continued to thrive and remains committed to providing their staff with personal and professional development opportunities and a great work environment.

*In the soul of every Editor lurks a hyperbolist

**We invite the submission of industry histories, and will honor the earliest firms first. The criteria, in addition to time, is "firms still in business". As the series continues, we may solicit deeper histories. Of particular interest is how our local industry was formed from the branching of veterans into new firms. This column welcomes input from engineering, equipment and contracting firms.

ASPE STUFF

Southwestern Ohio ASPE President Ron Bartley, PE, has circulated a proposal for NCEES to establish a category of "Plumbing Engineer". There has been some discussion among participants locally (AZ). For those seeking more information, contact rbartley@sfa-architects.com.

Registration for this year's Certified in Plumbing Design (CPD) Exam is now open. Online registration for this year's exam closes Thursday, March 24, 2017 at 6:00 p.m. EST.

Pete Menconi, PE
Editor

ALL SUGGESTIONS ACCEPTED AT
PMENCONIENGINEER@GMAIL.COM

And while all suggestions are accepted, Management reserves the right to disregard them at whim.